

Zigbee 3.0 Series User Manual

1. Product Feature

The item is made by zigbee 3.0 wireless transmitting technology with low power consumption, strong ability to build network automatically and anti-interference. Pairing the item with MiBoxer zigbee gateway to get dimming color, remote control, timing control, group control, music rhythm function.



Made by zigbee 3.0 standard protocol



Smart phone App control (zigbee gateway is necessary)



Support zigbee 3.0 remote control (zigbee gateway is necessary)

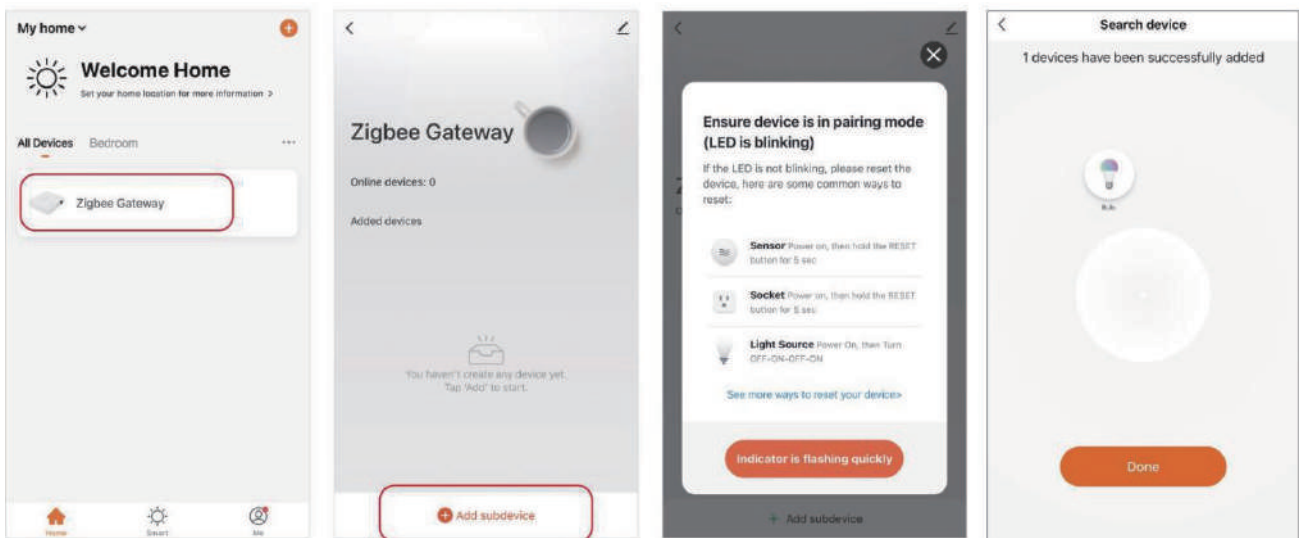


Third party voice control (zigbee gateway is necessary)

2. Instruction for smart phone App control

Please read zigbee 3.0 gateway instruction to add zigbee 3.0 gateway into MiBoxer Smart App firstly.

- 1) . Connect light with power source
- 2) . Ensure that light is breathing status (repeat to turn on and turn off light three times if the light is not breathing)
- 3) . Open **MiBoxer Smart App**, click the gateway to add sub-device
- 4) . Click **“Indicator is flashing quickly”**
- 5) . Use App to dim color, do group control and scene control once you finished adding device successfully

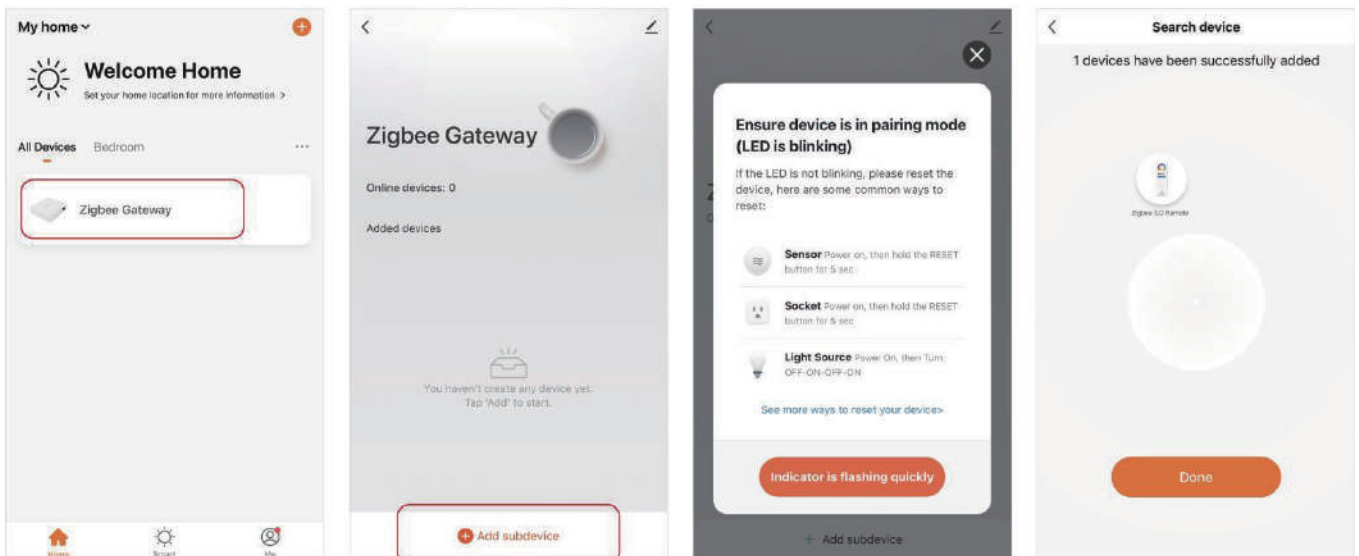


3. Instruction For Remote Control

Attention: the light and remote control must be added into same gateway

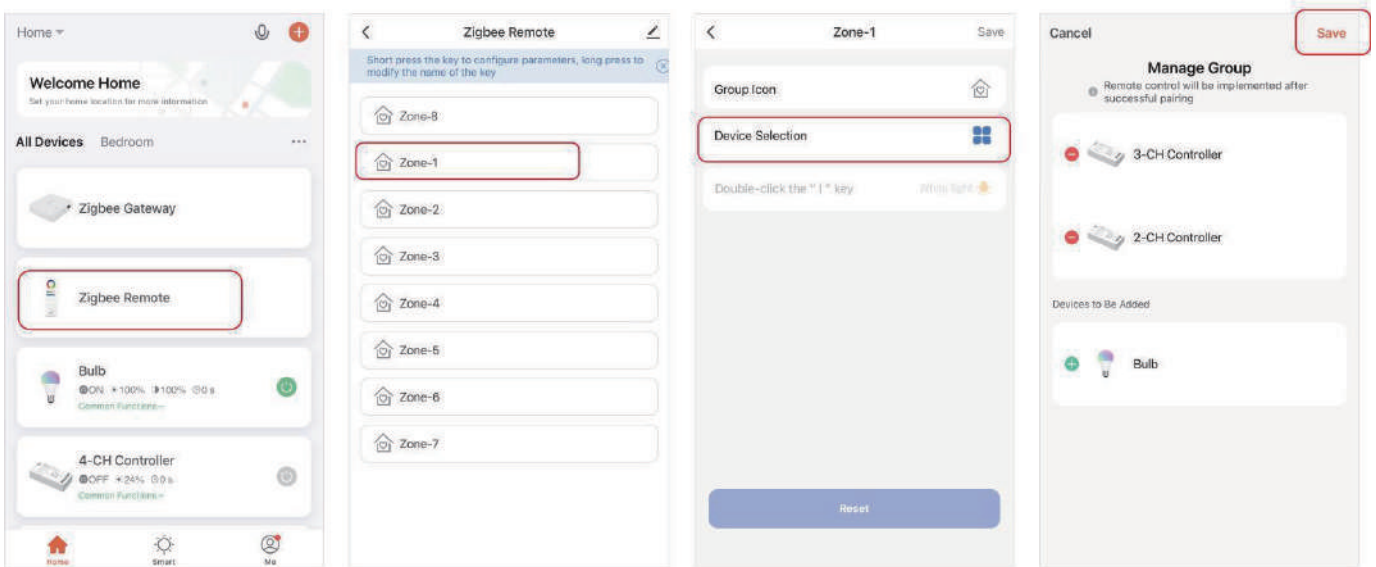
3.1.Add remote control into gateway

- 1). Find out zigbee gateway in MiBoxer Smart App
- 2). Click zigbee gateway and “Add subdevice”
- 3). Press “ ON ” and “ OFF ” button on remote with 5 seconds until indicator flashes (one time per seconds)
- 4). Click “ Indicator is flashing quickly ”
- 5). Searching device and click “ Done ” to finish adding device

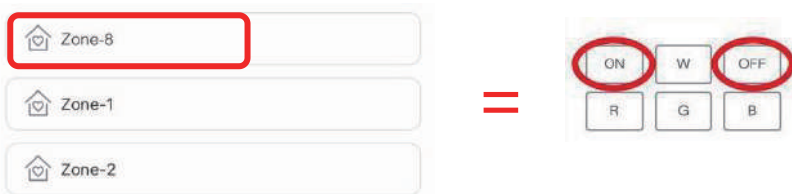


3.2. Instruction for pairing code between light and remote

- 1). Select “ **Zigbee Remote** ” , click enter
- 2). Select zones(Eg : Zone-1)
- 3). Click “ **Device Selection** ”
- 4). Select device , click “ **Save** ”



Attention : Zone-8 on APP = ON/OFF button on remote

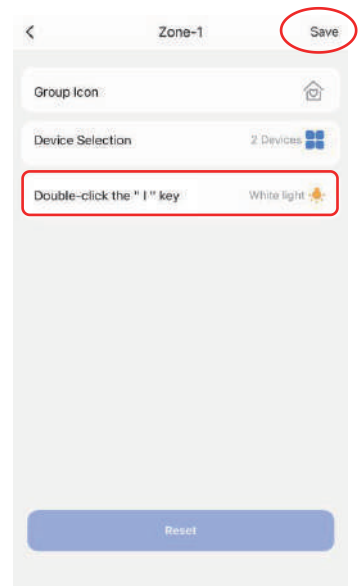


3.3. Double clicking “ I ” button to setup

- 1). Click **Double-click the “ I ” key** to enter setting
- 2). Press “ **Save** ” to complete

Explanation for double clicking “ I ” button

Select the favourite color or scene and save them, you can use “ I ” key to enjoy favourite color or scene quickly



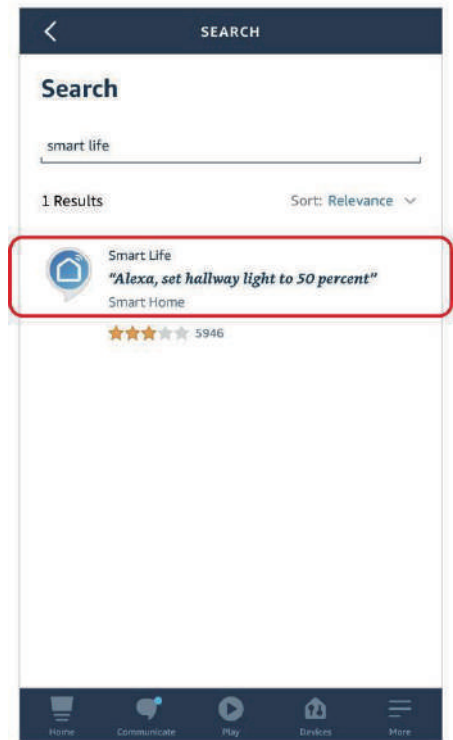
4. Instruction For Third Party Voice Control

Support Amazon Alexa Voice Control

Please search "Smart life" skill in Alexa App and activate skill

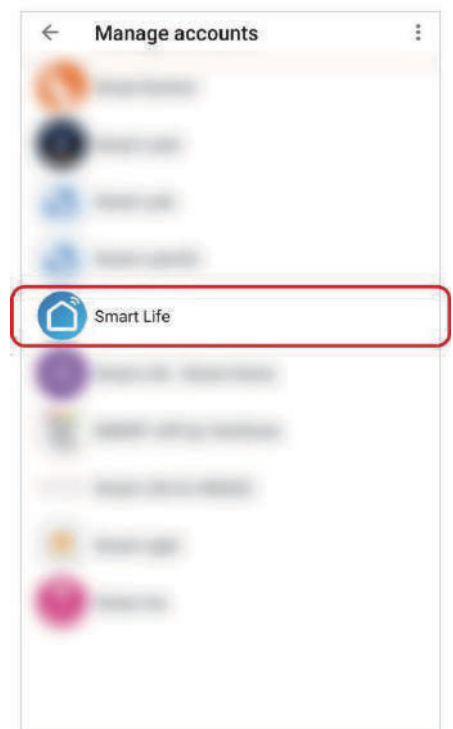
Video instruction to get Alexa Skill

https://miboxer.com/light/video/voice_2.html



Support Google Home Voice Control

Please search "Smart life" skill in Google Home APP and activate skill



5. Attention

- 1). Don't permit to use device in high temperature or humid area.
- 2). Don't install device near strong magnetic area, it will affect control distance seriously.
- 3). Don't disassemble device to avoid any damage if you are not expert.



Scan QR code to watch video instruction

Or enter into following link directly

<https://MiBoxer.com/light/video/zigbee.html>

