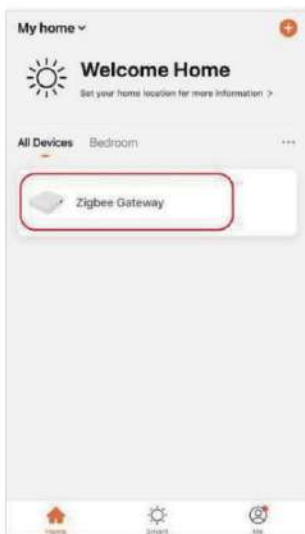
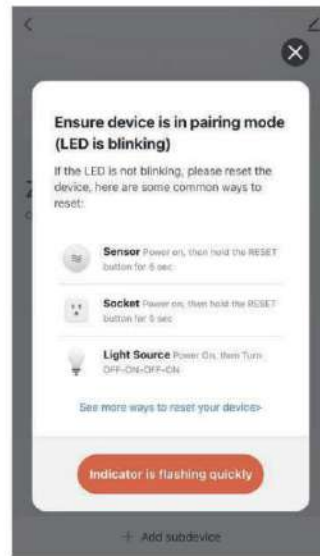
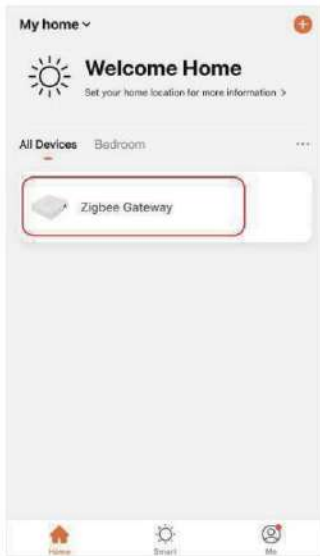


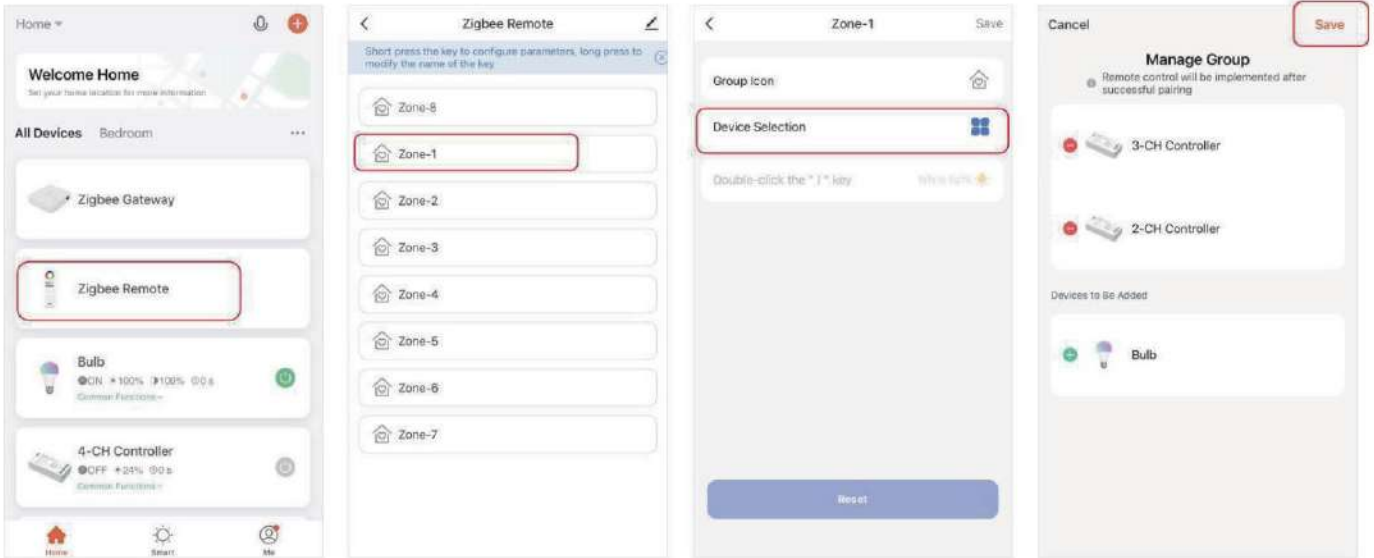
Videoinstruction for get a Alexa Skill  
Skill [https://miboxer.com/light/video/voice\\_2.html](https://miboxer.com/light/video/voice_2.html)













Videoinstruktion för att få Alexa skill

Skill [https://miboxer.com/light/video/voice\\_12.html](https://miboxer.com/light/video/voice_12.html)





# Zigbee 3.0 Series User Manual

## 1. Product Feature

The item is made by zigbee 3.0 wireless transmitting technology with low power consumption, strong ability to build network automatically and anti-interference. Pairing the item with MiBoxer zigbee gateway to get dimming color, remote control, timing control, group control, music rhythm function.



Made by zigbee 3.0 standard protocol



Smart phone App control ( zigbee gateway is necessary)



Support zigbee 3.0 remote control ( zigbee gateway is necessary)

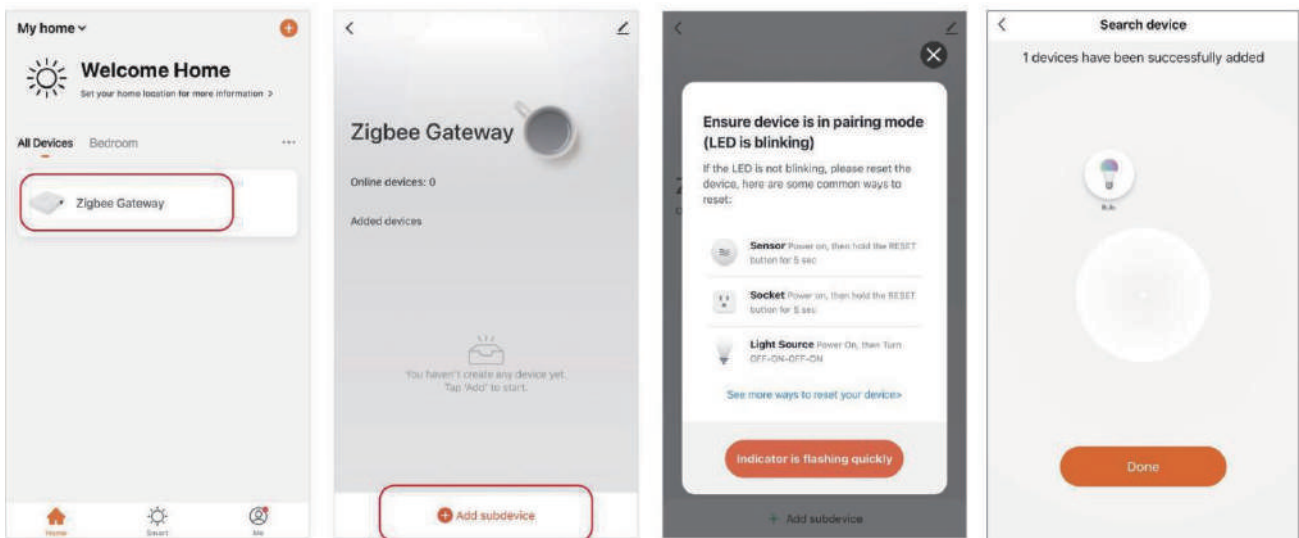


Third party voice control ( zigbee gateway is necessary)

## 2. Instruction for smart phone App control

Please read zigbee 3.0 gateway instruction to add zigbee 3.0 gateway into MiBoxer Smart App firstly.

- 1) . Connect light with power source
- 2) . Ensure that light is breathing status ( repeat to turn on and turn off light three times if the light is not breathing )
- 3) . Open **MiBoxer Smart App**, click the gateway to add sub-device
- 4) . Click **“Indicator is flashing quickly”**
- 5) . Use App to dim color, do group control and scene control once you finished adding device successfully

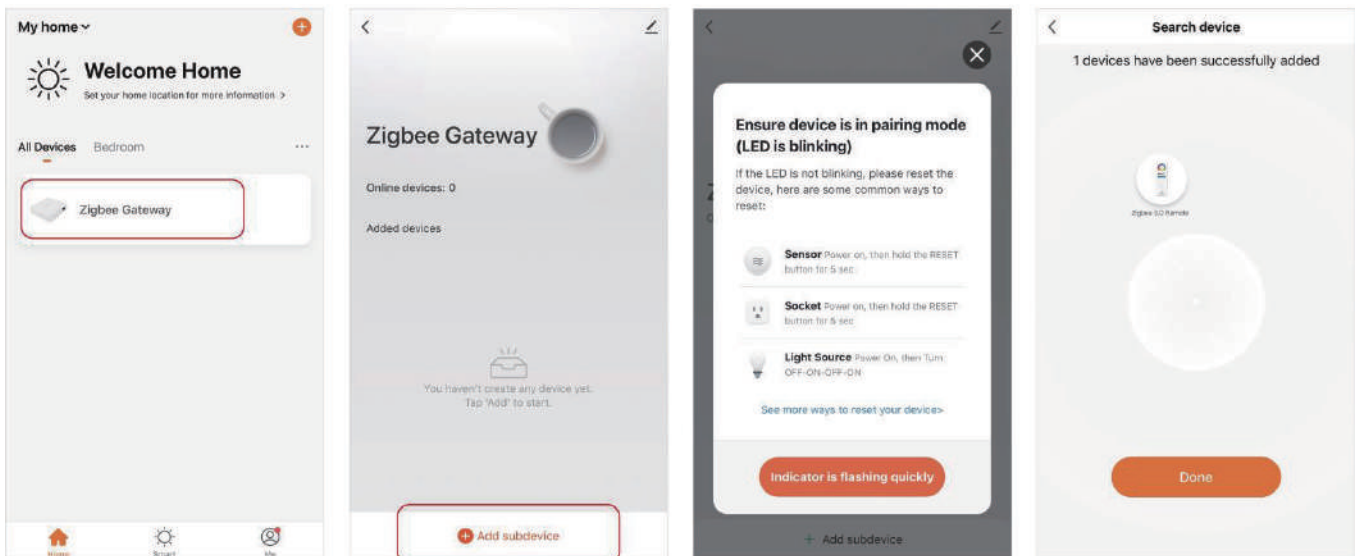
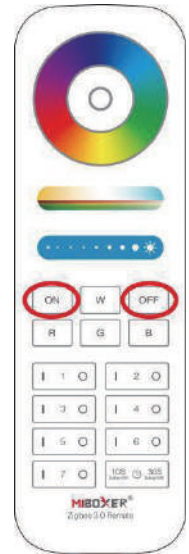


### 3. Instruction For Remote Control

**Attention: the light and remote control must be added into same gateway**

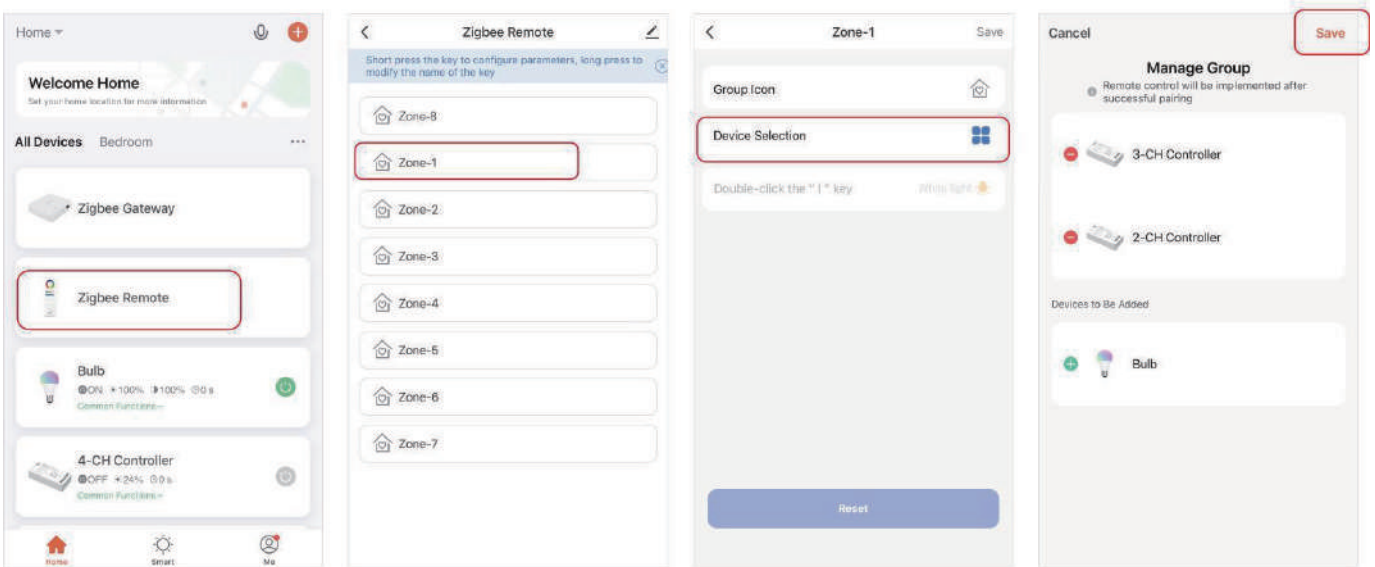
#### 3.1.Add remote control into gateway

- 1). Find out zigbee gateway in MiBoxer Smart App
- 2). Click zigbee gateway and “Add subdevice”
- 3). Press “ ON ” and “ OFF ” button on remote with 5 seconds until indicator flashes ( one time per seconds )
- 4). Click “ Indicator is flashing quickly ”
- 5). Searching device and click “ Done ” to finish adding device



### 3.2. Instruction for pairing code between light and remote

- 1). Select “ Zigbee Remote ” , click enter
- 2). Select zones(Eg : Zone-1)
- 3). Click “ Device Selection ”
- 4). Select device , click “ Save ”



**Attention : Zone-8 on APP = ON/OFF button on remote**

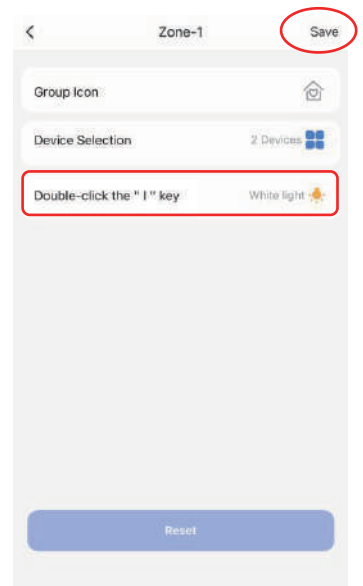


### 3.3. Double clicking “ I ” button to setup

- 1). Click **Double-click the “ I ” key** to enter setting
- 2). Press “ Save ” to complete

#### Explanation for double clicking “ I ” button

Select the favourite color or scene and save them, you can use “ I ” key to enjoy favourite color or scene quickly



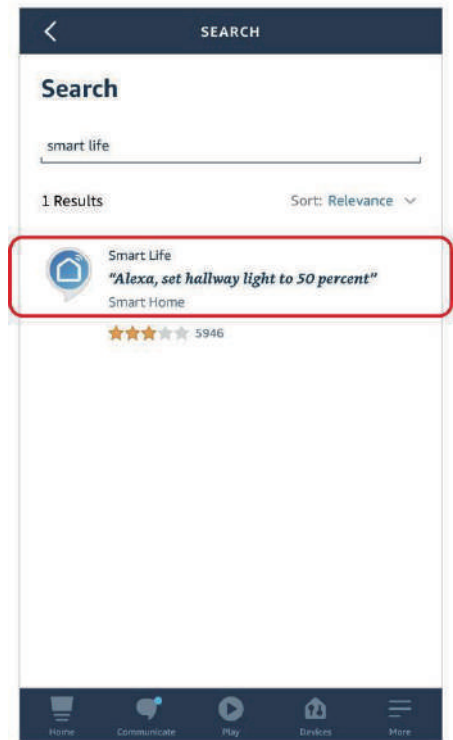
## 4. Instruction For Third Party Voice Control

### Support Amazon Alexa Voice Control

Please search "Smart life" skill in Alexa App and activate skill

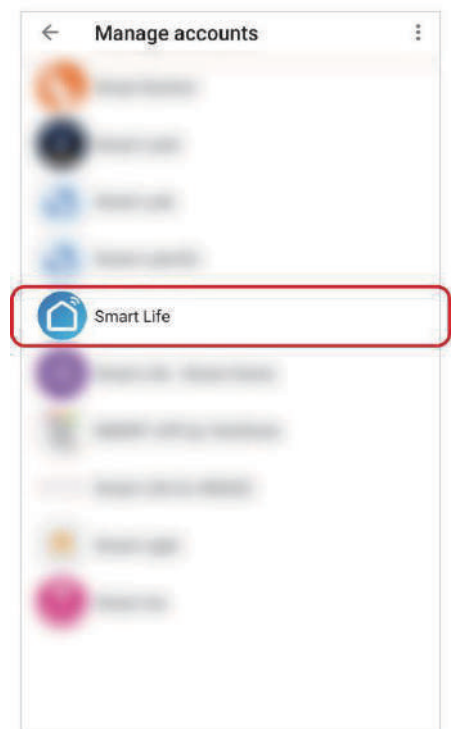
Video instruction to get Alexa Skill

[https://miboxer.com/light/video/voice\\_2.html](https://miboxer.com/light/video/voice_2.html)



### Support Google Home Voice Control

Please search "Smart life" skill in Google Home APP and activate skill



## 5. Attention

- 1). Don't permit to use device in high temperature or humid area.
- 2). Don't install device near strong magnetic area, it will affect control distance seriously.
- 3). Don't disassemble device to avoid any damage if you are not expert.



Scan QR code to watch video instruction

Or enter into following link directly

<https://MiBoxer.com/light/video/zigbee.html>

