

## 5 in 1 SPI+DMX LED Controller (2.4G)

Model No.: SPIR5

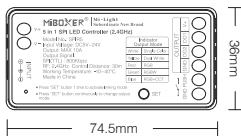
### Product Feature

- Support 2.4GHz wireless transmitting technology
- 5 in 1 SPI controller, single color, cct, rgb, rgbw, rgb+cct output selection
- Speed, static mode, dynamic mode and music mode adjustable
- compatible with DC5-24V input
- Dynamic mode : 28 kinds of white color and 80 kinds of RGB color for selection, it can change color, brightness, width and speed for those modes
- 8 kinds of music mode work with internal microphone and smart phone microphone
- Freely switching dynamic mode and music mode
- Have DND mode, usually used in power failure area to save power

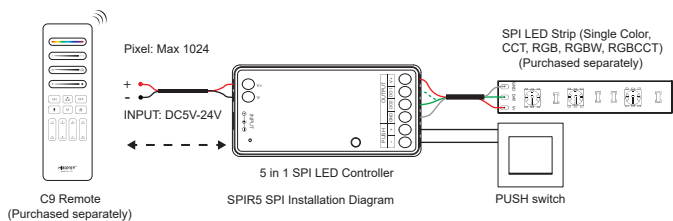


### Product Parameter

Product Name:	5 in 1 SPI LED Controller (2.4G)	Working Temp.:	-10~40°C
Model No.:	SPIR5	Dimension:	74.5*36*17mm
Input Voltage:	DC 5V-24V	EMC Standard (EMC):	ETSI EN 301 489-1 V2.2.3 ETSI EN 301 489-17 V3.2.4
Output Current:	Max 10A	Safety Standard (LVD):	EN 62368-1; 2020+A11;2020
Output signal:	SPI(TTL) 800Kbps (Max 1024 Pixel)	Radio Equipment (RED):	ETSI EN 300 440 V2.2.1
Standby current:	20mA	Certification:	CE, EMC, LVD, RED
Protocol:	RF 2.4GHz		
Control Distance:	30m		
IP Rate:	IP20		



# Connection Diagram



## Indication

When used in conjunction with the C9/B9 remote control, the following functions can be achieved

Compatible remote ( purchase separately)



C9 SPI Remote



B9 SPI Remote

**Static Mode Button:** 

Switch pure static lighting

**Dynamic Mode Button:** 

Short press to switch dynamic mode

**Music Mode Button:** 

Short press to switch music mode

**\*Under Music mode : You must press music mode button one more time if you want to do other operation**

**Scenes Button:** 

Only work for dynamic and music mode, short press to get scenes

Long press to save current scene while the light is under dynamic mode

**Lock Button:** 

Remote is locked automatically without any operation within 15 seconds, short press 1 time to unlock it  
Long press "Lock" button 3 seconds to shut it down

**RGB slider:** 

Touching to dim RGB

**Pixel points slider:** 

Touching to set length and width  
( checking more details from following instruction)

**Speed slider:** 

Touching to set speed

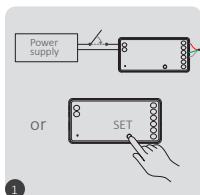
**Brightness slider:** 

Touching to dim

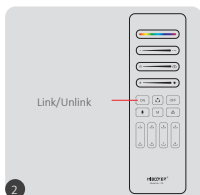
Under music mode : it can adjust sensitivity of microphone chip

# Link/Unlink

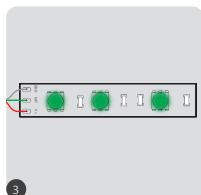
## Link



Power off 10 seconds and power on again or short press "SET"



Short press "ON" button 3 times within 3 seconds.

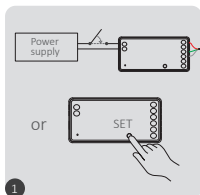


Green flashing state, then the code is successful.

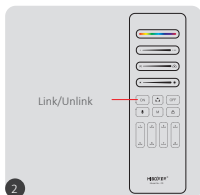


Link is failed if light doesn't flash, please repeat above steps  
(Attention: can not link again if remote already finished linking)

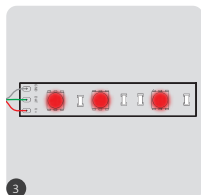
## Unlink:



Power off 10 seconds and power on again or short press "SET"



Short press "ON" button 5 times within 3 seconds.



Red flashing state, Then clear the code successfully.



Unlink is failed if light doesn't flash, please repeat above steps  
(Attention: no need to unlink if the light never be linked)

# Setting

## 1. Setting the color sequence from strip light

Long press "OFF" 5 seconds until lighting up single color



Flashing red, short press  
red area



Flashing green, short  
press green area



Flashing blue, short  
press blue area



Flashing white, short press  
"♻️" button

## 2. Setting Length (Pixel number: mini 8pt, max 1024pt)

Long press "ON" 5 seconds until lighting up white color and last point is blinking



Sliding to change length



Short press to add one pt, long  
press to add pt continuously



Short press to reduce one pt, long  
press to reduce pt continuously

Short press "ON/OFF" to leave out once setting is done

## 3. Setting width for dynamic mode



Sliding pixel number to change pt number and get different length for dynamic mode which have various sections.

## 4. Setting time and color for ON/OFF

Short press "OFF" 5 seconds to enter into running ON/OFF



Sliding "Speed" to set time for ON/OFF



Sliding "RGB" to set color for ON/OFF

Short press "ON/OFF" to leave out once setting is done

## 5. Turn Do Not Disturb mode on and off (ON by default)

Turn on "Do Not Disturb" (applicable to areas with frequent power outages to save energy)

### Turn on Do Not Disturb mode:

Short press the "OFF" button 3 times within 3 seconds, and then short press the "ON" button 3 times. The light flashes 4 times to indicate success.

**Note:** When the lamp is powered on again after a power outage, its status (lights on or off) will remain the same as before the power outage.

### Turn off Do Not Disturb mode:

Short press the "ON" button 3 times within 3 seconds, and then short press the "OFF" button 3 times. The light flashes 4 times slowly to indicate successful shutdown.

**Note:** When the lamp is powered on again after a power outage, its status will be on by default.

## Attention

1. Please turn off power supply before installation.
2. Please ensure input voltage to be same as requirements from device.
3. Don't disassemble device if you are not expert, otherwise it will damage it.
4. Please do not use the light in the place with widely range metal area or strong electromagnetic wave nearby, otherwise, the remote distance will be seriously affected.



Made in China